

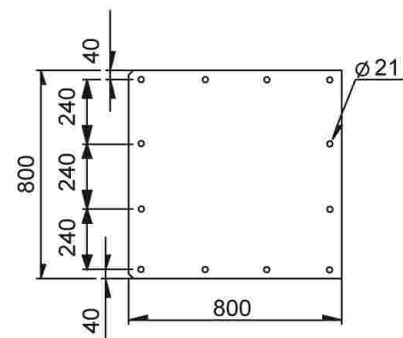
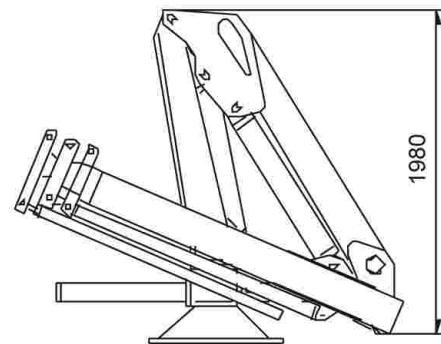
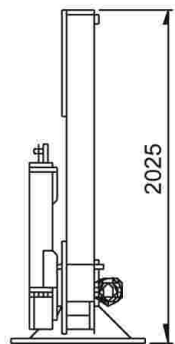
DATOS TÉCNICOS 080M

Momento de elevación max. - Max lifting moment	80 kNm
Alcance máximo horizontal - Max horizontal reach	T-080M/1 - 5200 mm
	T-080M/2 - 6850 mm
	T-080M/3 - 8350 mm
Inclinación máxima vertical - Max vertical reach	75°
Ángulo de rotación - Slewing angle	400°
Par de rotación - Slewing torque	12 kNm
Presión de trabajo - Working pressure	25 MPa
Caudal máximo al distribuidor - Max oil flow	25L/min
Peso grúa - Crane weight	T-080M/1 - 1200 kg
	T-080M/2 - 1320 kg
	T-080M/3 - 1450 kg

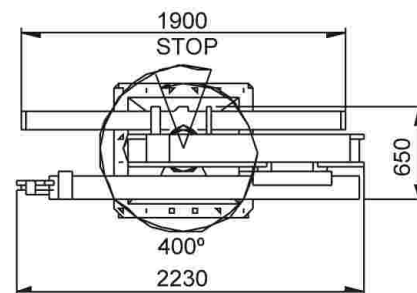
ACCESORIOS - ACCESSORIES:

- Prolongas manuales - Manual extensions
- Cabrestante - Winch
- Activación elementos suplementarios - Supplementary element activation
- Control remoto - Remote control

DIMENSIONES GENERALES / GENERAL DIMENSIONS



DIMENSIONES DE LA HUELLA



Hnos. TOIMIL GARCIA, S.L.

Equipos Forestales

GRUAS HIDRAULICAS

Forestales - Industriales - Marinas

Teléfono: (+34) 986 79 40 44 Fax: (+34) 986 79 40 47
Móvil: (+34) 609 08 90 06

36512 PRADO - LALIN - PONTEVEDRA (España)

E-mail: toimil@toimilgruas.com

www.toimilgruas.com

Distribuidor:
Distributor:

En beneficio del desarrollo técnico, TOIMIL se reserva el derecho de realizar las modificaciones que considere oportunas, sin previo aviso.
On the interests of technical development, TOIMIL reserves the right to make appropriate changes without prior warning.

819.00.0002.00-04/04/10

TOIMIL 080M

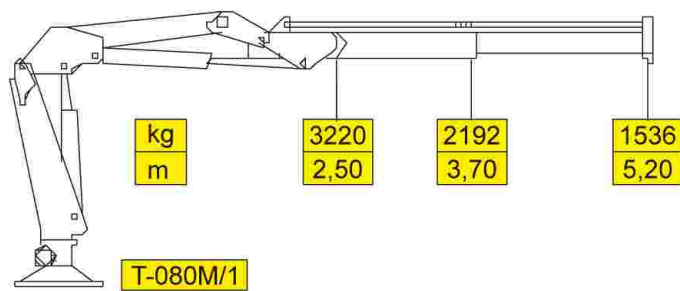


MARINE CRANES



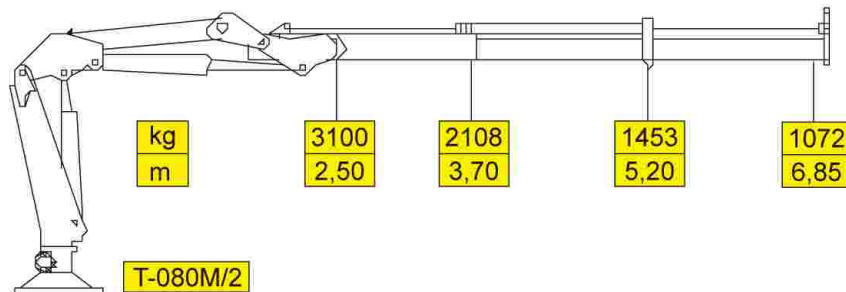
T-080M/1

DIAGRAMA DE CARGAS / LOAD DIAGRAM



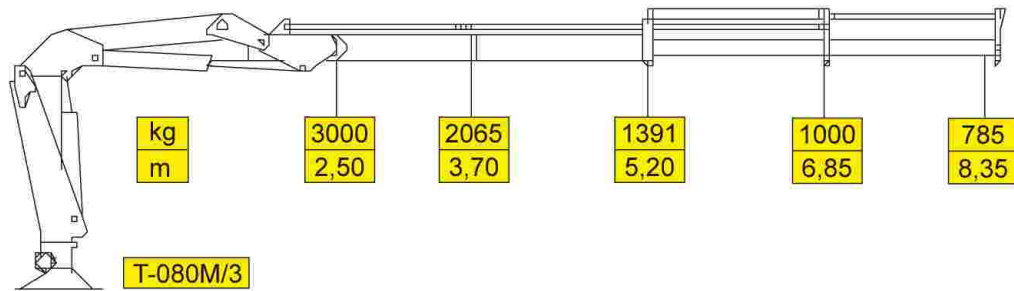
T-080M/2

DIAGRAMA DE CARGAS / LOAD DIAGRAM



T-080M/3

DIAGRAMA DE CARGAS / LOAD DIAGRAM

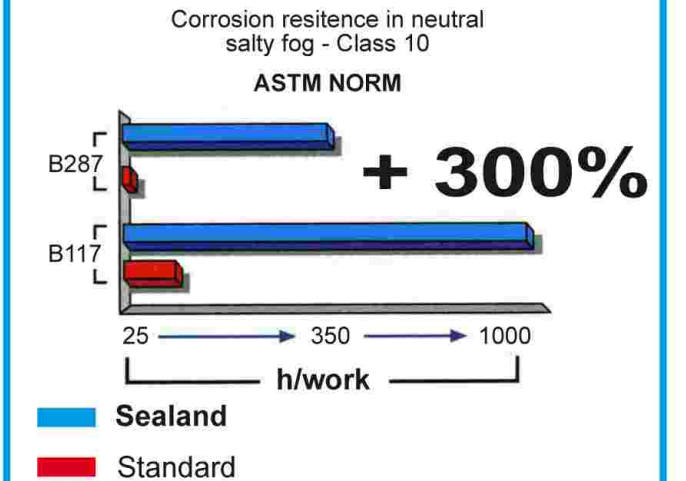
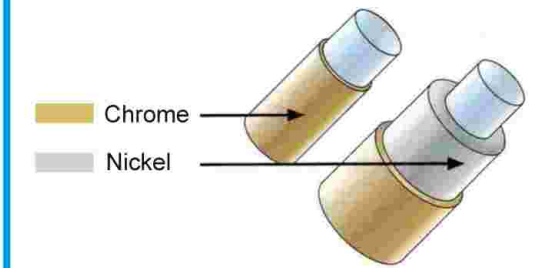
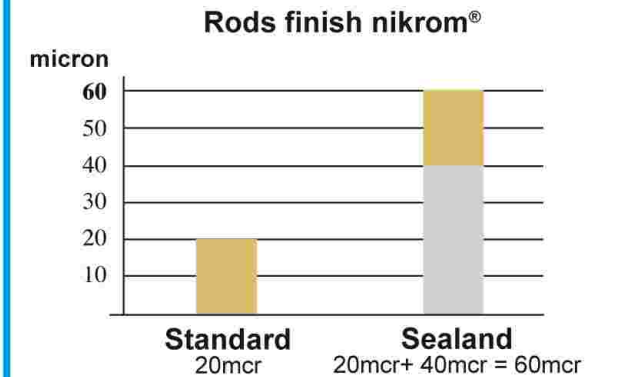


- Limitador de momento
- Distribuidor de cinco elementos
- Cilindros extensión independientes
- Válvulas pilotadas
- Norma del proyecto: EN15018
- Tipo de ensayo a la fatiga: B3
- Sprint Generation System (SGS)
- Electronic Black Box (EBB) only Radio
- Movimiento Suave de Descenso (SDD)

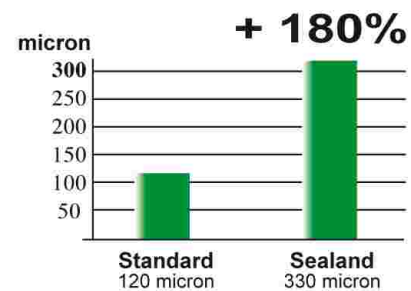


- Load limiting device
- Distributor five elements
- Independent extension cylinders
- Flanged valves
- Design in accordance with EN15018
- Fatigue test classification: B3
- Sprint Generation System (SGS)
- Electronic Black Box (EBB) only Radio
- Soft Descend Drive (SDD)

DOUBLE CROSS CHROME PLATING, 60 MICRONS THICK ON RODS IN ALL CYLINDERS



PAINTING: FIRST COAT WITH EPOXIDAL BI-COMPONENT, FINAL DOUBLE COAT WITH POLYURETHANE BI-COMPONENT ENAMEL (250-330 MICRONS, 1+1+2 LAYERS)



DOUBLE CROSS CHROME PLATING ON ALL BARRELS



STAINLESS STEEL FITTINGS ON ALL HOSES