

TOIMIL 140



TOIMIL

140/1s

Kg	13500*	5380	3100	2170
m.	1.0	2.50	4.34	6.14

H 140/1s = 2472

140/2s

Kg	12750*	5080	2880	2060	1520	1110	820	600
m.	1.0	2.50	4.42	6.23	8.10	10.1	12.2	14.4

H 140/2s = 2395

140/3s

Kg	12300*	4925	2730	1940	1450	1110	820	600	410
m.	1.0	2.50	4.51	6.31	8.18	10.16	12.23	14.42	16.54

H 140/3s = 2350

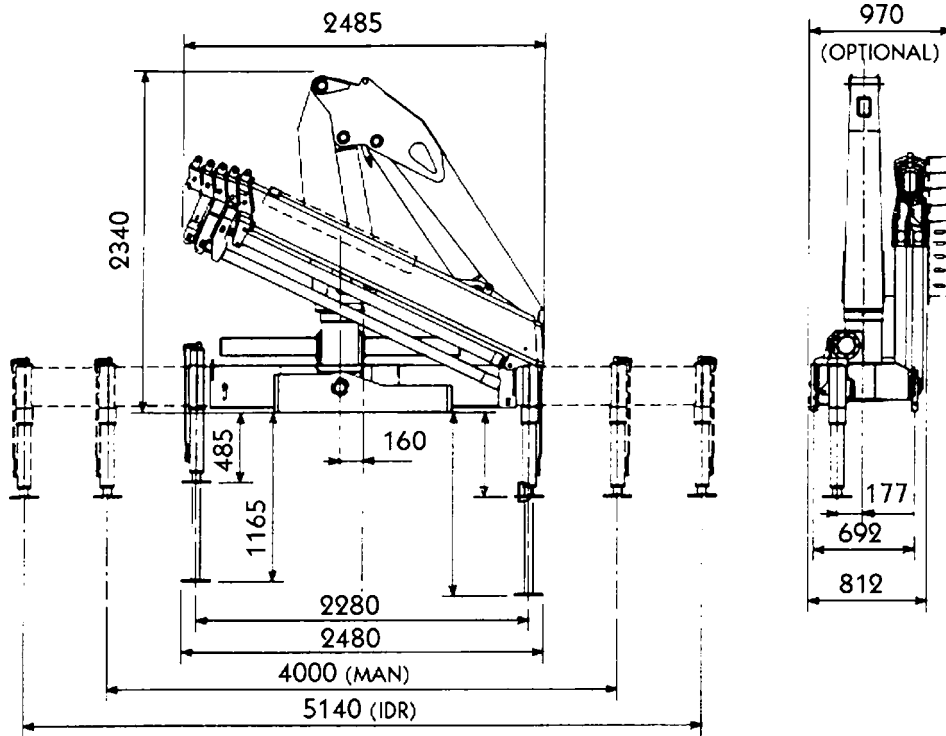
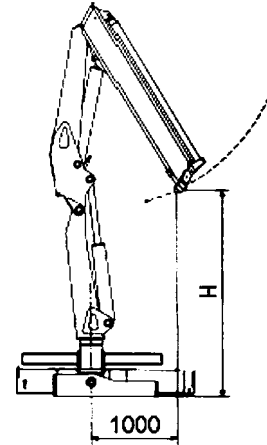
140/4s

Kg	12000*	4785	2600	1800	1300	1000	820	600	410
m.	1.0	2.50	4.60	6.40	8.27	10.25	12.23	14.42	16.54

H 140/4s = 2320

140/5s

Kg	12000*	4785	2600	1800	1300	1000	820	600	410
m.	1.0	2.50	4.60	6.40	8.27	10.25	12.23	14.42	16.54



Hermanos Toimil García, S.L.

Teléf.: 986 79 40 44 - Fax: 986 79 40 47

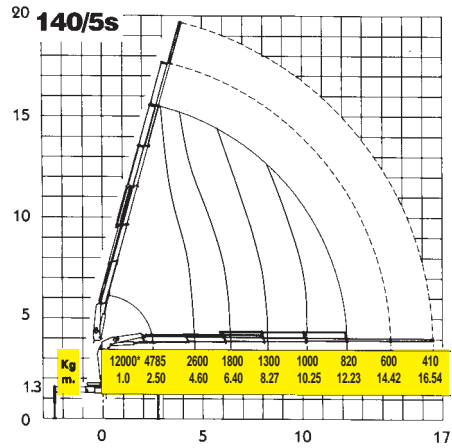
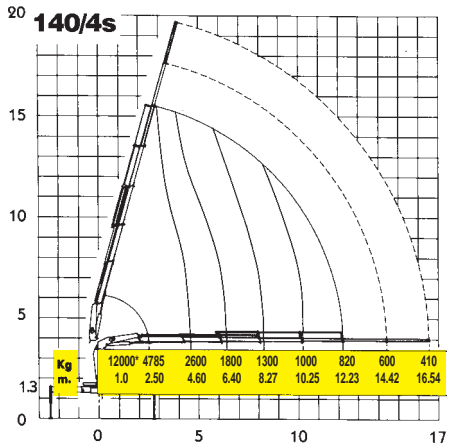
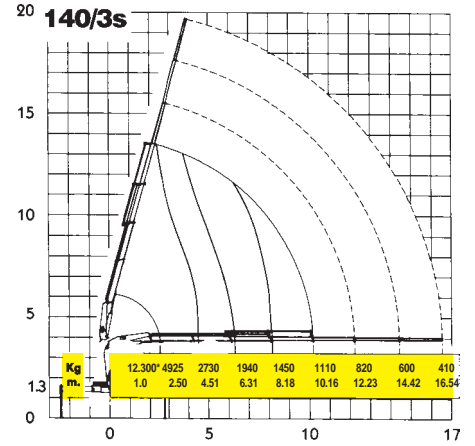
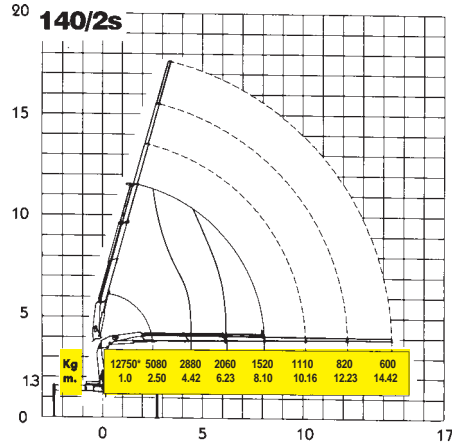
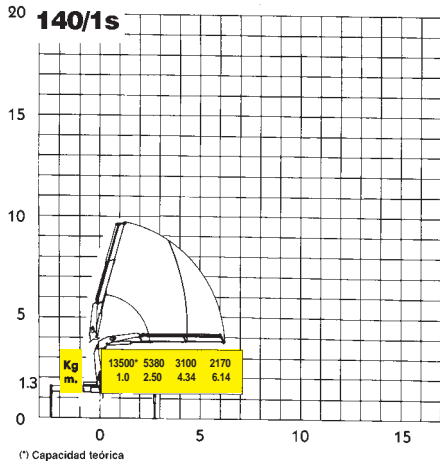
Teléf. int.: +34 986 79 40 44 - Fax int.: +34 986 79 40 47

e-mail: toimil@toimilgruas.com

36512 Prado - Lalín (Pontevedra) España

Distribuidor:
Distribuidor:

DIAGRAMA DE CARGAS / LOAD DIAGRAM



DATOS TÉCNICOS – TECHNICAL DATA

140		1s	2s	3s	4s
Momento de elevación máximo. Max lifting moment.	kNm LbsFt	132.3 97640			
Alcance hidráulico horizontal. Hydraulic horizontal reach.	mm. Ft in	6140 20' 2"	8100 26' 7"	10160 33' 4"	12230 40' 1"
Alcance hidráulico vertical. Hydraulic vertical reach.	mm. Ft in	9620 31' 7"	11500 37' 9"	13500 44' 4"	15500 50' 10"
Angulo de giro. – Slewing angle.	°	370			
Velocidad de giro. – Slewing speed.	s (360°)	40	40	40	50
Inclinación máxima a plena carga. Max slope viable at full capacity.	°	5			
Presión de trabajo. Working pressure.	Mpa Psi	27 3920			
Caudal máximo al distribuidor. Max oil flow.	l/min Gal/min (US)	30 7.9			
Capacidad depósito de aceite. Oil tank capacity.	l Gal (US)	100 26.4			
Peso de la grúa sin gatos. Crane weight without stabilizer.	Kg Lbs	1450 3195	1580 3485	1700 3745	1800 3965
Peso gatos extensibles. Weight of sliding stabilizers	Kg Lbs	300 (hydr.) 200 (man.) 660 (hydr.) 440 (man.)			

